

NPT Threaded Reducer Hex Bushings

Male NPT	Female NPT	150# Iron Part #	150# Galvanized Iron Part #	150# 316 Stainless Steel Part #
1/4"	1/8"	HB2518	HB2518G	HB2518SS
3/8"	1/8"	HB3818	---	---
	1/4"	HB3825	HB3825G	HB3825SS
1/2"	1/8"	HB5018	---	---
	1/4"	HB5025	HB5025G	HB5025SS
	3/8"	HB5038	HB5038G	HB5038SS
3/4"	1/8"	HB7518	---	---
	1/4"	HB7525	HB7525G	HB7525SS
	3/8"	HB7538	HB7538G	HB7538SS
	1/2"	HB7550	HB7550G	HB7550SS
1"	1/8"	HB1018	---	---
	1/4"	HB1025	HB1025G	HB1025SS
	3/8"	HB1038	HB1038G	HB1038SS
	1/2"	HB1050	HB1050G	HB1050SS
	3/4"	HB1075	HB1075G	HB1075SS
1 1/4"	1/2"	HB1250	---	---
	3/4"	HB1275	---	HB1275SS
	1"	HB1210	HB1210G	HB1210SS
1 1/2"	1/2"	HB1550	---	---
	3/4"	HB1575	HB1575G	HB1575SS
	1"	HB1510	HB1510G	HB1510SS
	1 1/4"	HB1512	HB1512G	HB1512SS
2"	1/2"	HB2050	HB2050G	---
	3/4"	HB2075	HB2075G	HB2075SS
	1"	HB2010	HB2010G	HB2010SS
	1 1/4"	HB2012	HB2012G	HB2012SS
	1 1/2"	HB2015	HB2015G	HB2015SS
2 1/2"	1 1/2"	HB2515	---	---
	2"	HB2520	HB2520G	HB2520SS
3"	1"	HB3010	---	---
	1 1/2"	HB3015	---	---
	2"	HB3020	HB3020G	HB3020SS
	2 1/2"	HB3025	---	HB3025SS
4"	1"	HB4010	---	---
	1 1/2"	HB4015	---	---
	2"	HB4020	HB4020G	HB4020SS
	2 1/2"	HB4025	---	---
	3"	HB4030	HB4030G	HB4030SS
5"	4"	HB5040	---	---
6"	3"	HB6030	---	---
	4"	HB6040	---	---

Male NPT	Female NPT	3000# Forged Steel Part #	125# Brass Part #
1/4"	1/8"	HB2518FS	---
3/8"	1/8"	---	---
	1/4"	HB3825FS	---
1/2"	1/8"	---	---
	1/4"	HB5025FS	---
	3/8"	HB5038FS	---
3/4"	1/8"	---	---
	1/4"	HB7525FS	---
	3/8"	HB7538FS	---
	1/2"	HB7550FS	---
1"	1/4"	HB1025FS	---
	3/8"	HB1038FS	---
	1/2"	HB1050FS	---
	3/4"	HB1075FS	---
1 1/4"	3/4"	HB1275FS	---
	1"	HB1210FS	HB1210B
1 1/2"	3/4"	HB1575FS	HB1575B
	1"	HB1510FS	HB1510B
	1 1/4"	HB1512FS	HB1512B
2"	1/2"	---	HB2050B
	3/4"	HB2075FS	HB2075B
	1"	HB2010FS	HB2010B
	1 1/4"	HB2012FS	HB2012B
	1 1/2"	HB2015FS	HB2015B
2 1/2"	1 1/2"	---	HB2515B
	2"	HB2520FS	HB2520B
3"	2"	HB3020FS	HB3020B
	2 1/2"	HB3025FS	HB3025B
4"	2"	---	HB4020B
	3"	HB4030FS	HB4030B

• For additional information on pipe dimensions please reference dixonvalve.com.



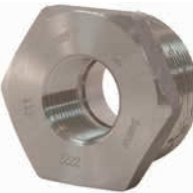
150# iron



150# galvanized iron



150# 316 stainless steel



3000# forged steel



125# brass