

International Shore Connections

Features:

- meets US Coast Guard specifications for vessels 1000 gross tons or more
- makes possible the connection of two different threads between ship and shore or between ships
- 7" OD brass flange with 4 3/4" holes
- solid wedge disc with tapered seats
- includes 8 washers, 4 hexagon brass nuts, 4 hex head bolts, 1 washer, 1 fiber gasket
- working pressure: **300 PSI**



shore side



ship side

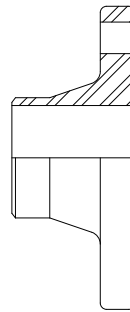
Description	Brass Part #	Wt. Lbs.	Price
shore side	09-318-00001	7.38	\$318.00
ship side	09-319-00001	7.14	318.00

150 LB. ASA Forged Flanges Weld Neck

Feature:

- raised face

Size	Carbon Steel	
	Part #	Price/E
1"	WN100	\$45.25
1 1/4"	WN125	47.00
1 1/2"	WN150	47.25
2"	WN200	53.00
3"	WN300	62.75
4"	WN400	74.50
5"	WN500	115.00
6"	WN600	113.00
8"	WN800	198.00
10"	WN1000	310.00



150 LB. MSS Flanges

NPT	316 Stainless Steel	
	Part #	Price/E
1 1/2"	TRMS150	\$155.95
2"	TRMS200	188.00
3"	TRMS300	294.75
4"	TRMS400	469.10
6"	TRMS600	878.65



Flange Gaskets

Features:

- standard drop-ring type all 1/16" thick
- reference page 668 for joint sealant gasket material
- For dimensional information and diagrams, see pages 712 and 713

Size	Neoprene		Klingersil® C-4401	
	Part #	Price/E	Part #	Price/E
1"	NG10	\$1.60	AG10	\$2.80
1 1/4"	NG15	1.95	AG15	3.10
1 1/2"	NG20	1.95	AG20	3.20
2"	NG25	2.10	AG25	3.35
2 1/2"	NG30	2.80	AG30	4.10
3"	NG35	2.30	AG35	5.30
4"	NG40	3.20	AG40	6.40
5"	NG50	6.70	---	---
6"	NG60	4.15	AG60	9.85
8"	NG80	6.80	AG80	13.75

