

Female Replacement Washers

Application

- For use with female internally expanded Holedall couplings on page 597

Size	Nitrile Rubber Part #
3/4"	H5071-BU
1"	H5072-BU
1-1/4"	H5073-BU
1-1/2"	H5074-BU
2"	H5075-BU
2-1/2"	H5076-BU
3"	H5077-BU
4"	H5078-BU



HB Coupling Expander Machine

Applications

- For use in a fixed location for small production runs or as a portable repair type expander

Features

- Hand operated, pull-through type expander
- Attaches sizes 3/4" through 2" of the Holedall Petroleum style and all sizes of the curb pump fittings
- Expander tooling sold separately



Part


2500HB0000

Pump Hose Couplings

Application

- Economical and trouble-free couplings for gas pump hose

Features

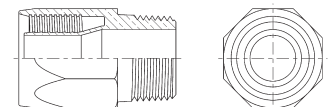
- Serrations on the stem embed in the hose, eliminating wicking and leakage
- Shell extends beyond the stem preventing cutting of interior walls; tapered ends of stem and shell protect hose when flexed
- Provide tamper-proof static connection, which cannot be broken without completely damaging coupling and hose
- Internal expansion of stem to nominal I.D. of hose provides full flow
- Broad, firm grip of coupling extends hose life by making it possible for hose to withstand repeated bending
- Hand and electrically operated installation equipment is available; consult Dixon® for pricing and availability
- Reattach static wire if required 



Approval

- UL recognized

Size	Male NPT	Hose O.D.	Chrome Plated Brass Part #
3/4"	3/4"	1-9/64"	H5751
		1-11/64"	H5752
		1-13/64"	H5753
		1-7/32"	H5754
		1-17/64"	H5755 ¹
1"	1"	1-25/64"	H5771
		1-29/64"	H5772
		1-1/2"	H5773
		1-9/16"	H5774



¹ Thrust plate required, part # 25000HTL15